

Public Document Pack

Working with communities to improve the quality of life for all in Argyll and Bute

www.argyllandbutecpp.net



8 May 2013

A meeting of the **MID ARGYLL, KINTYRE AND THE ISLANDS COMMUNITY PLANNING GROUP** will be held in the **TEMPLAR'S HALL, HARBOUR STREET, TARBERT** on **WEDNESDAY, 5 JUNE 2013 at 2:00 PM.**

AGENDA

1. **APOLOGIES**
2. **DECLARATIONS OF INTEREST**
 - (a) Minutes
Mid Argyll, Kintyre and the Islands Community Planning Group held on 6 March 2013. (Pages 1 - 8)
 - (b) Minutes
Mid Argyll Partnership meeting held on 13 March, 2013. (Pages 9 - 16)
 - (c) Minutes
Kintyre Initiative Working Group meeting held on 26 April, 2013. (Pages 17 - 26)
4. **PRIMARY SCHOOL STANDARDS AND QUALITY REPORTS**(Pages 27 - 32)
5. **JOINT HEALTH IMPROVEMENT PLAN**
Report by NHS Highland. (Pages 33 - 46)
6. **NEW COMMUNITY ENGAGEMENT STRATEGY**
Report by IOD Project Officer.
7. **ARGYLL AND BUTE COUNCIL GAELIC LANGUAGE PLAN CONSULTATION**
Report by the Head of Improvement and HR (Pages 47 - 62)
8. **PROPOSED AREA FORUMS**

Report by IOD Project Officer. (Pages 63 - 70)

9. ISSUES RAISED BY COMMUNITY COUNCILS

10. ISSUES RAISED BY THE THIRD SECTOR PARTNERSHIP

11. PARTNERSHIP UPDATES

- (a) Police Scotland
- (b) Scottish Fire and Rescue update
 - Reform Update
 - Spring Strategy
 - Hearing Impairment Referrals
- (c) Update - NHS Highland
- (d) Update - Scottish Water
- (e) Update - Argyll Voluntary Action
- (f) Update - Community Safety Forum - To follow

MID ARGYLL, KINTYRE AND THE ISLANDS COMMUNITY PLANNING GROUP

Shirley MacLeod – Area Governance Manager

Theresa McLetchie – 01546 604511

**MINUTES of MEETING of MID ARGYLL, KINTYRE AND THE ISLANDS COMMUNITY
PLANNING GROUP held in the TOWN HALL, MAIN STREET, CAMPBELTOWN
on WEDNESDAY, 6 MARCH 2013**

Present:

	(Chair)	
	Councillor Anne Horn	
Councillor Rory Colville		Councillor Robin Currie
Councillor John McAlpine		Councillor Sandy Taylor
Shirley MacLeod		Area Governance Manager
Audrey Baird		Community Development Officer
Maryanne Stewart		AVA
Alastair MacGregor		Chief Executive, ACHA
Yvonne Litster		Area Manager, ACHA
Group Commander Eddie Renfrew		Strathclyde Fire & Rescue
Inspector Tom Harper		Strathclyde Police
Phil Denning		HM Inspector
Jeanne Holles		Community Learning Standards Officer
Eileen Wilson		IOD Project Officer
Lorna Elliott		LEADER Project Co-ordinator

1. APOLOGIES

Apologies were intimated by:-

Councillor John Semple (attending another meeting on Council business)
Councillor Douglas Philand (attending another meeting on Council
business)
Councillor Donald MacMillan (attending another meeting on Council
business)
Councillor Donald Kelly
Mark Benton, Scottish Ambulance Service
Christina West, NHS Highland

The Chair welcomed all to the meeting.

2. MINUTES OF THE PREVIOUS MEETING HELD ON 5 DECEMBER 2012

The Minute of the last meeting held on 5 December 2012 was approved as a true and correct record, subject to the following change:.

Page 5, AOB:

Audrey Baird requested that a letter be written on behalf of the local

Community to express concerns on the time delay in obtaining funds from the LEADER programme.

Matters Arising:

Councillor Currie highlighted some amendments which were needed to the CPG distribution list.

Decision:

Noted that Theresa McLetchie would implement these changes.

3. MINUTES OF THE PREVIOUS MEETING HELD ON 9 JANUARY 2013

The Minutes of the meeting held on 9 January, 2013 was approved as a true and correct record.

4. ACHA - UPDATE

The group heard a presentation by Alastair MacGregor, Chief Executive – ACHA.

Councillor McAlpine detailed his concerns in regards ongoing dampness issues in some of the ACHA properties in Tarbert and questioned if this was resulting in a void in the ACHA rental section, if remedial work was proving ineffective. Alastair MacGregor responded that there were some historical dampness issues in several ACHA properties in Tarbert. Yvonne Litster, ACHA Area manager, detailed difficulties encountered with some joint ownership properties, whereby ACHA in endeavouring to undertake remedial works faced conflict with other joint owners. She reported that on occasion it had been necessary to liaise with Argyll and Bute Council to issue enforcement orders.

Discussion continued in the potential issues which would result when the Welfare Reform Act was implemented.

The Chair enquired if there would be respite care provision in the Extra Care Housing being built by Fyne Homes in Lochgilphead.

Decision:

Agreed that ACHA would provide further detail on the status of remedial work on the properties with dampness in Tarbert.

Agreed that ACHA would ascertain from Fyne Homes if any of the Extra Care Housing had been apportioned for respite care.

The Chair thanked Alastair MacGregor for his informative presentation and update.

5. TARBERT ACADEMY

The Group heard a presentation by Phil Denning, HM Inspector on the recent HM Inspection undertaken of Community and Learning Development (CLD) partners within the area of Tarbert Academy.

Discussion followed in regards the need to work more closely with local Community Planning groups, developing more good practice in local communities and encourage more young people to be involved in local projects and initiatives.

The Chair thanked Phil Denning for his presentation and report. Phil Denning commended the help and support extended by Jeanne Holles and highlighted this support as elements of good practice.

Decision

1. Noted that the MAKI CPG requested an updated report on how actions in the report had been progressed by Community Learning staff and the local community to enable ongoing continuous development of the Tarbert Academy learning community.
2. Agreed that this report should be discussed by the Community Planning Partnership at the end of March to enable replication of this effective process in other local learning communities in Argyll and Bute.

6. ISSUES RAISED BY COMMUNITY COUNCILS

(a) TIMETABLE OF RESPONSE ON COMPLAINTS RAISED

The Area Governance Manager reported that this issue had come from a local Community Council meeting and was in regards to a suitable response time from Council Officers in dealing and actioning complaints. Shirley intimated that she would respond directly to the person who raised this issue.

7. ISSUES RAISED BY THE THIRD SECTOR PARTNERSHIP

There were no updates.

8. PARTNERSHIP UPDATES

(a) STRATHCLYDE POLICE

Inspector Tom Harper reported that there would be no change in Strathclyde Police delivery of service at local level after 1st April with

the implementation of the National Force. Contact details would remain the same, although email addresses may have a slight differentiation.

Councillor McAlpine detailed his concerns at the lack of police involvement in local community issues, lack of visibility in the community and the increase of crime in Tarbert. The Chair affirmed that, in her opinion, vandalism had increased in Tarbert.

Inspector Tom Harper reported on the difficulties in providing officers to attend local events and advised that the vacant position at Tarbert would be going to advert shortly. He also updated the group of the appointment of Safer Communities Officers who would be based in Mid-Argyll and be the points of contact in relation to Anti-Social Behaviour, Joint Tasking and Partnership working.

Decision

1. Agreed that Inspector Harper would provide an update to Ward 2 Members in regards the vacant position in Tarbert.
2. Agreed that Inspector Harper would provide up-to-date crime statistics for Tarbert.

(b) **STRATHCLYDE FIRE AND RESCUE**

Group Commander Eddie Renfrew reported on the success of the Winter Strategy Fire Campaign, which had run from 19 December, 2012 - January, 2013 and thanked partners for their help and support.

He advised that the figure for Road Traffic Accidents were down for this year.

The Young Fire Fighters in Campbeltown were doing extremely well and discussions were on-going with Argyll College in attaining a qualification and, perhaps, instigating a future course.

A further initiative - The Red Truck - had been very successful while based in Tarbert. A total of 40 people had been trained and it has also been used for possible recruitment. The Red Truck would be moving to Lochgilphead on 6 April.

Group Commander Renfrew then gave a short presentation on the Local Plan for Argyll and Bute.

The Chair thanked Group Commander for his informative update and presentation.

(c) **UPDATE - NHS**

Update from Christina West, Locality Manager

Kintyre

- A further bed modelling meeting was undertaken on 10th January and agreement reached that Campbeltown Community Hospital will operate with a total of 21 beds from 1st April, this comprises 19 acute GP beds and 2 continuing care beds for existing patients. In addition it was agreed that there should be a contingency plan to make a further three beds available at short notice should the need arise. A redesign group, led by Donnie Cameron, Clinical Services Manager, will now identify and progress the required actions to implement the changes.
- To address concerns raised by the Community Council regarding the decisions made at the bed modelling meeting in January, a drop in event has been organised to take place on Thursday 14th March from 2-8pm in the Town Hall Campbeltown. The information available at the bed modelling will be available for wider community review. Members of the public are invited to drop in at any time and meet with local NHS Highland staff to discuss the recent changes to care provision within the hospital and the community. In addition to staff from the NHS and Social Work there will also be representatives from a number of other organisations who provide services in the community such as Carr-Gorm, the Red Cross and Tele Care. The event will be advertised through the local paper, radio and the distribution of posters

Islay & Jura

- At a meeting on 16th January, members of the CHP management team and the Islay GPs agreed a time limited (12 months) package of additional support to ensure the continued safe delivery of health services on Islay.
- Dr Gordon Peterkin has been appointed to the role of independent clinical expert to support the Review of Health Services on Islay.
- The first meeting of the Islay Review Steering Group took place on Friday 1st March, chaired by Robin Creelman, Chair of Argyll & Bute CHP Committee. The Steering Group will be supported by two sub groups, focused on workforce development and public involvement. The health sub group of the community council have been asked to nominate a representative for the Steering Group and each of the sub groups. They will also work with the CHP public involvement manager to identify groups who will be invited to participate in the public involvement group.
- The GPs have formally notified the CHP that they are now in a position to be able to continue providing GP out of hours services for Port Ellen and Port Charlotte areas. Letters have been sent to all patients registered with the two practices notifying them of this change.
- The building works to create two new out patient consulting rooms are now complete. Work is underway in the physiotherapy department and will be completed before the end of March.
- The dental van will be returning to the Islay Community Hospital

site by the end of April. Building work is due to commence this week in the car park on a pedestrian crossing in preparation for the return of the van. The connection to services will be undertaken by contractors in 6-8 weeks time.

Mid Argyll

- Further locum GPs will be secured for Inveraray/Furnace GP practice for the period March-June 2013 to ensure service continuity, while we await a decision by Scottish Government regarding a proposal submitted by NHS Highland to test models for sustainable remote and rural health care services. One of the community council representatives has been updated so that the community are kept informed of progress with the GP vacancy.

(d) UPDATE - SCOTTISH WATER

There was no update.

(e) UPDATE - ARGYLL VOLUNTARY ACTION

No update from AVA.

9. DRAFT- SINGLE OUTCOME AGREEMENT

The group gave consideration to the report which sought comments and feedback from Partners on the latest draft of Argyll and Bute's new Community Plan/Single Outcome Agreement (SOA) 2013-2023.

Decision:

Agreed that Members would feedback any comments to Eileen Wilson, Improvement and Organisational Development (IOD) Project Officer before 21 March, 2013.

10. COMMUNITY SAFETY PARTNERSHIP EXCEPTION REPORTING TO COMMUNITY PLANNING GROUP - TO FOLLOW

The Group considered a report which advised them on the main tasks undertaken by members of the Community Safety Partnership in the MAKI area.

11. AREA FORUM EVENTS 2013

The Group considered a report to hold an Area Forum event and to finalise the group's intentions with regards to the event.

Decision

Agreed that Maryanne Stewart, AVA and Audrey Baird, Community Development Officer would make contact with local groups and feedback comments/views to Eileen Wilson and that Maryanne, Audrey and Eileen would develop an outline of an event for consideration at the next MAKI CPG which was scheduled for 5 June, 2013.

Discussion followed and a Saturday in September, 2013 was suggested, as a good time to hold the event, with Tarbert as a possible venue.

12. MEETING VENUE - JUNE MAKI CPG

The Group discussed the venue for the MAKI CPG and Tarbert was suggested as a venue.

Decision

Agreed that Theresa McLetchie would investigate possible venues in Tarbert, with a VC facility, preferably the Templar's Hall.

13. REVIEW OF THE SCHEME OF ESTABLISHMENT FOR COMMUNITY COUNCILS

The group gave consideration to proposals for the Short Life Working Group (SLWG) which had been established to review the current Scheme for the Establishment of Community Councils.

Decision

The group agreed to note the recommendations detailed within the report at 2.1 and 2.2.

(Reference: Report by Executive Director – Customer Services, dated 20 February, 2013, submitted).

14. LEADER - PAYMENT ISSUES AND AWARDS PROGRAMME

Lorna Elliott informed the group of a recent customer satisfaction survey and detailed that 86% of customers were happy with the service and a further 14% were not.

There were 2 claims officers involved in processing applications, with a 28 day turn around in service deliver.

Furthermore, there was a facility available to draw down money on a monthly basis.

Councillor Colville commended the programme.

Lorna Elliott advised that group on a potential reduction in funding, amounting to a possible 3%. She distributed leaflets and literature detailing the service.

The Chair thanked Lorna for attending and providing this update to the group.

**MINUTES of MEETING of MID ARGYLL PARTNERSHIP held in the COUNCIL CHAMBERS,
KILMORY, LOCHGILPHEAD
on WEDNESDAY, 13 MARCH 2013**

Present:

(Chair)

Councillor Sandy Taylor

Councillor Robin Currie

Councillor Anne Horn

Councillor John McAlpine

Councillor Donald MacMillan

Councillor Douglas Philand

Stephen Doogan

Argyll & Bute Council

Paul Martin

Argyll & Bute Council

Rod Buchanan

ACHA

Andrea Henderson

Furnace CC

Jeanette Laughton

Ardrishaig CC

Colin Davidson

Craignish CC

Mark Wilson

Strathclyde Police

Betty Rhodick

Lochgilphead CC

Bob Millar

Lochgilphead CC

1. APOLOGIES

Councillor John McAlpine

Jim frame (SEPA)

Jane McKenzie (Scottish Water)

Stewart Clark (Argyll & Bute Council)

Allan MacDonald (Argyll & Bute Council)

Ian MacIntyre (Tarbert and Skipness CC)

2. MINUTES OF MEETING HELD ON 11 DECEMBER 2012

The Minutes of the previous meeting held on 11 December, 2012 were approved as a true and correct record, subject to the following amendment:-

Minutes:-

Page 3, Matters Arising

Councillor Taylor advised that a positive meeting had been held between himself, Bob Millar and Councillor Louise Glen-Lee.

Page 3, Furnace

There was an indepth discussion on wind farms and Andrea Henderson advised that the Wind Farm companies were looking at doing a survey to gauge the impact on the local community.

Page 5, Rod Buchanan could arrange for heating advisors to be sent out.

3. MATTERS ARISING

Discussion ensued and it was agreed that Heart of Argyll would be invited to the next MAP meeting.

The issue of historical dampness in ACHA properties in Tarbert was discussed.

Decision:

Agreed that Rod Buchanan would provide a report for the next MAP meeting detailing dampness issues in the MAKI area.

Councillor Horn raised her concerns regarding overhanging trees and bushes adjacent to the water treatment plant in Tarbert.

Decision:

Agreed that that the Area Governance Officer would write to Scottish Water on this issue.

Colin Davidson enquired on the status of timetable of Oban-Lochgilphead bus service

Decision:

Noted that the Area Governance Officer would ascertain the status of this issue.

4. VILLAGE/ TOWN/AREA PLAN UPDATES INCLUDING

(a) ARDRISHAIG

Jeanette Laughton reported that the Wind Farm was fully operational and had become effective from 24 December. The 1st revenue stream would be received in the near future. Funding applications would be invited shortly and notification would be in the local press. Applications would be restricted to those living within the PA30 post-code. There would also be a distinct educational grant facility available to those living in Mid Argyll. The application assessment panel would consist of 3 Community Council members; 3 Co-operative Trust Directors; 1 Unitary Councillor and 1 Youth member. Meetings would be scheduled twice per year and an assessment grid had been prepared to assist with assessments.

The waterfront regeneration project in Ardrishaig was continuing and a Stakeholders meeting was being scheduled for the end of April.

Further applications were being made to upgrade the play park in Ardrishaig. A further survey was being instigated regarding A83 crossing provision in Ardrishaig.

Jeanette also detailed concerns in regards the street lights along the shore front. Councillor Philand confirmed that this issue was now resolved.

Councillor Philand updated the group on the recent study undertaken on the A83 by Jacobs. There would be a further study and Ardrishaig Community Council would be contacted directly by Jacobs to enable their input into the subsequent study.

Councillor MacMillan enquired on the restrictions on eligibility for the Educational Grant. Jeannette Laughton informed the group that the grant would be available for the whole of Mid Argyll. Details would be placed in the local press and the ethos of the grant would be for the advancement and benefit in Education.

(b) TARBERT CONSERVATION AREA

Councillor Horn updated the group regarding the addition of more pontoons in Tarbert harbour and also noted that there was also a new play park at the outdoor gym. She advised the group of a forthcoming event at Tarbert Castle – Medieval Melee – which would be held on 1 June. The work was now completed at the Castle and the school had been involved in a lot of the improvement works.

Betty Rhodick (on behalf of Ian MacIntyre - who was not present) raised the car parking issues and the perceived need for a crossing in Tarbert centre. Councillor Horn replied that the Harbour Board had further plans for the walkway and deemed it unlikely that they would entertain requests further parking in this area.

The Chair stated that he would raise this issue with Councillor Semple, Lead Councillor for Environment, Development and Infrastructure.

(c) CRAIGNISH

Colin Davidson stated that updates in the local Press detailing that Craignish Community Council had objected to a planning application for affordable housing were untrue. Contrary to local reports, Fyne Homes had not submitted the said application, but it was in fact the Trustees of the Church of Scotland. The application was for 5 upmarket houses as well as affordable housing.

The Community Council were of view that the application was in conflict with the recent Local Plan and an objection had been lodged.

Colin Davidson was of the opinion that a public hearing would be heard and, if this was the case, then Craignish Community Council could submit their views in regards their opposition to the build.

The Chair thanked Colin for this update and stated that some issues would need to be resolved in terms of the design before the application could be considered at a discretionary hearing.

(d) **FURNACE**

Andrea Henderson reported that there was still no replacement GP at the surgery in Furnace. The locum provision was effective; however the community were anxious to get a permanent GP in place.

Councillor Currie detailed the success of the appointment of a GP on Jura and stated that he would provide the relevant contact details to Andrea Henderson, should they wish to discuss the issue further.

Andrew Henderson continued that the road and scrub issues had been resolved by the Roads Department. Work undertaken by Scottish Water to install a sewerage system some ten years ago is causing concern to villagers in that adjacent foreshore/garden land has subsequently been eroded by the sea. Although Scottish Water has agreed to carry out work to protect its sewer, several manholes and S.W.T. plant, this does not include any repair to the eroded bank/foreshore.

(e) **WEST LOCHFYNE**

There was no update.

(f) **LOCHGILPHEAD**

Betty Rhodick reported on the recent issue of phones being knocked out by contractors carrying out works at Lochgilphead Joint Campus. On reporting the issue to the contractors in question, Betty voiced her concerns at the lack of empathy she had received.

She detailed another issue, whereby correspondence relevant to a recent planning objection had not been acknowledged. Bob Millar reported that he had written directly to Sandy Mactaggart on this matter and had not received a reply to date.

The Chair advised the group on the Council's response policy and detailed the complaints procedure should the Community Council wish to formalise their complaint. Further discussion followed in the provision of an advisory document detailing relevant Council officers contact details for local Community Councils.

Decision:

1. Noted that the Area Governance officer would ascertain the status of the Lochgilphead Community Council complaint and report his findings back to the Community Council Convener and the Members as appropriate.
2. Noted that the Area Governance Officer would compile a short report with relevant Council officers contact details for dissemination to Community Councils.

(g) **DUNADD**

There was no update.

5. HOUSING ISSUES

1. AHFA

ACHA are in the process of setting up an arms length organisation called Argyll Homes for All (AHFA) who will be able to trade on the open market and carry out tasks the Housing Association is unable to do due to its charitable status. Main thrust initially is to run its own direct labour service and managing properties built for Mid market renting (Dalmally).

2. Welfare Reform

The first phase of the Government's Welfare Reform is due to be implemented in April with the introduction of the bedroom tax. This will affect around 60-70 ACHA tenants in Mid Argyll who will require to pay between £10 - £20 per week off their benefits towards their rent. It will undoubtedly put pressure on the number of tenants seeking to transfer to smaller properties which are in short supply and it is feared that this will increase rent arrears. Tenants affected have been visited.

3. Duncholgan

Council have confirmed an application for Sustrans funding for the Core Path from Kilmory to Castleton via Duncholgan. Tenants continuing to lobby for further funding for signage/bus stop/traffic calming at the road end.

4. Play Areas – Dewar Avenue

Rod Buchanan advised that a questionnaire had been handed out to local residents in regards the future of Dewar Avenue play park. House owners who had responded had not been willing to help fund any improvements or remedial work. Correspondence had been sent to Lochgilphead Community Council advising that the play equipment would be removed as ACHA had determined it to be unsafe. Betty Rhodick enquired if ACHA would be prepared to support the upkeep of the play park, if Lochgilphead Community Council provided funds for new play equipment.

Bob Millar raised the issues of the front green in Lochgilphead and detailed the success of the harbour area in Tarbert.

The Chair replied that the local Community Trust in Tarbert had been behind the regeneration and revamping of the area. Councillor Horn advised of possible funding from the Health and Well Being fund and advised that Audrey Baird was the point of contact.

Decision:

Noted that Rod Buchanan would ascertain if ACHA would be prepared to support the play park if new play equipment was provided by the Community Council.

Rod Buchanan reported that funding for an additional swing at the Kingsway play park has been confirmed and is likely to be undertaken in the next financial year. In regards to the access road Bridge Terrace, Furnace, Rod Buchanan advised that he is in discussion with Yvonne Llitster, Regional Manager in respect of this and will update the Partnership at the next meeting. Councillor Horn detailed her thanks for the provision of a new swing by ACHA in Tarbert .

6. SCOTTISH WATER

There was no representative from Scottish Water at the meeting but issues were raised for discussion:-

Overhanging tress at the water treatment plant in Tarbert which could prove dangerous.

7. TRANSPORTATION ISSUES

(a) UPDATE FROM ROADS DEPARTMENT

Stewart Clark was unable to attend the meeting. However, an update had been provided, which included detail on the provision of the new footpath at the former High School site in Lochgilphead.

8. HEALTH/SOCIAL CARE ISSUES

There were no updates.

9. COMMUNITY SAFETY

The Area Governance officer gave an update on the activities of the Community Safety Forum and other Community Safety initiatives in the last quarter.

Jeanette Laughton stated concerns on behalf of Ardrishaig Community Council in regards the Community Resilience report.

Discussion followed in regards the length of the Resilience report and the need for more involvement with local Community Councils at the start of any consultation/initiative. Also, how to determine the best resilience package for each area.

Decision:

1. Noted that the Area Governance Officer would invite the Resilience Project Leader to the next MAP meeting for further discussion and ascertain the amount of funding remaining from the funding allocated by the Scottish Government for Community Resilience.
2. Noted that the Area Governance Officer would ascertain if there is a comprehensive list of companies providing care to vulnerable residents in Mid Argyll. He would supply any such list to Betty Rhodick to inform the

Community Council Resilience plannign accordingly.

Mark Wilson updated that group that a recent Strathclyde initiative – Operation Myriad would complete on 15 March.

Decision:

Noted that Mark Wilson would provide a report for the Mid Argyll area.

He informed the group on local issues:-

- Bogus callers
- Metal thefts
- Heating oil thefts

10. COMMUNITY INITIATIVES

Betty Rhodick informed that group that Armed Forces Day in Lochgilphead was being held on 6 July.

11. AMENITY ISSUES

There were no updates.

12. AOB

Mark Wilson advised the group of 2 new posts – Safer Communities Unit . These would be based in Mid Argyll.

13. DATE OF NEXT MEETING

No date was agreed for the next meeting. The Area Governance Officer would schedule a meeting date for the next quarter and advise the group accordingly.

**MINUTES of MEETING of KINTYRE INITIATIVE WORKING GROUP held in the TOWN HALL,
CAMPBELTOWN
on FRIDAY, 26 APRIL 2013**

Present:

	(Chair)
	Councillor Rory Colville
Councillor Anne Horn	Councillor John Semple
Jim Martin	Vice-Chair & Campbeltown CC
Melissa Stewart	Argyll and Bute Council
Stewart Clark	Argyll and Bute Council
Ishabel Bremner	Argyll and Bute Council
David Roger	HIE
Chris Haran	NFU
Pauline Houston	PA to Jamie McGrigor MSP
Jane Mayo	Picture House
Harvard Davis	Campbeltown Community Business Ltd
John Lamont	HIAL
Darlene Russell	Argyll College
Tracy Grant	SKDT
Maryanne Stewart	AVA
Susan Paterson	KFCC, KPPF
Barbara Halliday	Business Gateway
Alan Reid	MP
Matthew Willis	MACC

1. APOLOGIES

Apologies for absence were intimated by:-

John Forster
Jamie McGrigor MSP
Ann Gallacher
Michael Russell MSP
Councillor Robin Currie
Alan Walker
Pat Dean
Dhonna McCallum
John Bakes

2. MINUTES

The Minute of the previous meeting held on 8 March, 2013 was approved as a true and correct record.

Proposed by Councillor Anne Horn, seconded by Councillor Rory Colville.

.

3. MATTERS ARISING

The Chair informed the group that the issue of a representation to the Argyll Ferry User Group would be given further discussion at a special MAKI Area Committee scheduled for 1 May.

In regards the issue of HIE taking forward Councillor Currie's concerns for the Carradale area, David Rogers agreed that he would follow up this issue and get an update for the next KIWG meeting.

4. INFRASTRUCTURE AND INWARD INVESTMENTS

(a) A83 - WORLD HERITAGE

The Chair related the background to this item and sought the views of the KIWG in regards the preparatory work and research which would be needed to present a case to take to Westminster.

He reported that a volunteer had been found to undertake the lengthy work, although the person was on holiday and, therefore, this had not yet been confirmed. The work would involve researching and detailing the unique history of the local area, highlighting the scenic views of the local landscape from the A83.

Councillor Semple commented that there may be hurdles to overcome in terms of UNESCO's criteria and suggested that this be looked at before a final decision was made to proceed.

Discussion followed and various suggestions were put forward as strategic areas for research. These included:-

Kilmartin Museum

Kintyre and Gigha Marketing Group (possibility of linking into this group).

The group agreed to retain this issue on the Agenda for future discussion.

(b) FERRY - UPDATE

Councillor John Semple informed the group of the proposed timetable and operational dates for the new Campbeltown - Ayrshire Service. He advised that the service would initially be a pilot scheme, with the first year being primarily to 'imbed' the service.

Although representatives from the Ferry Users Group (which includes a representative from KIWG) and CalMac would undertake the process of review and monitoring of the service to help develop the best model, Councillor Semple felt that there was an opportunity for the KIWG as a Group to take this forward..

Councillor Semple reported that discussions were still ongoing with South Ayrshire Council in regards the possibility of the inclusion of other routes to the service. Isabel Bremner advised that the

Economic Development Action Plan had been approved at the full Council meeting, with potential to amend the local Area Plan to include a Northern Ireland route

Further discussion followed in regards the final sailing date for 2013 - September 28. Susan Paterson informed the group that this was in fact the September Weekend holiday and advised that it would perhaps be prudent to extend the sailings to accommodate visitors to the area.

The Chair voiced further concerns in regards the potential impact of the service to existing Harbour users and the practicality of extending the Harbour to ensure that these users were not impinged upon.

Action: It was agreed to write to CalMac highlighting the issue of extending the date of the final sailing in September to accommodate visitors to the area.

(c) TOWN HALL - UPDATE

Tracey Grant informed the group that the legal process of the Asset Transfer of the Town Hall had commenced and it was proposed to submit the bid next month. She further advised that a Cost Plan had been adopted and that an Open Day was being held in the Town Hall on Tuesday 30 April between 11a.m.-6p.m.. This presented an opportunity for the local community to see the plans and meet with the architect.

The Chair encouraged the group to review the plans and highlighted some of the proposed works. He stated the need to identify more users for the building and reported on the 2 new Directors to the SKDT.

Ishabel Bremner advised that a report was being brought to the Strategic Management Team meeting scheduled for May.

(d) CAMPBELTOWN AIRPORT

John Lamont reported that passenger's figures over the year had increased by 1.2%; however flight movements were down by 21.8%. He advised that the reason for the reduction in the flight movements was due in part to the lack of training flights.

Plans were being put in place for out of hours flying which would be introduced in a couple of months and a risk assessment exercise was being planned for the near future. He informed the group of the proposed timetable for the new Sunday flights service which would commence on 16 June and run to 29 September. Flights would arrive in Campbeltown at 1800 and depart at 1825 and this would

initially be part of a 2 year trial.

(e) **FARMING AND CREAMERY UPDATE**

Chris Haran updated the group on the impact of the recent severe weather to the farming industry. Discussion followed in regards to hardship funding and Chris advised that funding would be available to dispose of dead stock although other discussion specifically about compensation were taking place. It was agreed that this would be discussed at the next meeting.

The Chair advised the group of the Phase 1 construction work on the Creamery. The contract had been awarded to 2 outside contractors; however they were employing local labour.

Maryanne Stewart enquired why there was no representation from the fishing industry which played an important and integral part in the local area.

Action: It was agreed that contact would be made with representatives from the local Clyde Fishermen's Association and an invite be extended for them to attend the next KIWG meeting.

(f) **ROAD ISSUES**

Stewart Clark tabled a report providing an update on local roads issues. He advised the group that the additional Capital Funding would be given further discussion at the forthcoming MAKI Business Day on 1 May. He advised on a proposal for a Traffic Management survey in Campbeltown Town Centre.

Concerns on local roads were highlighted and these included:-

Excavation works by Scottish Water at Southend
School Road, Tarbert
Drum
Moss Road

(g) **KINTYRE RENEWABLE ENERGY HUB**

The group held discussion about Renewables issues in the local area.

Ishabel Bremner reported on the recent visit to the area by Nicola Sturgeon and comments which alluded to Kintyre as the only Council area to have achieved what they said they would in their Renewable plans.

Matthew Willis highlighted the need to advertise the whole area as a package, with effective and coordinated marketing. He reported on various parties who had expressed interest in the MACC site, but, as yet, no firm commitment.

Discussion continued in regards having the necessary facilities in place to attract investors to the area.

Ishabel Bremner informed the group of an event in Aberdeen under the ABRA banner which promoted awareness. She also detailed the forthcoming visit of the National Grid Director to the area in September.

The Chair advised that a representative from Community Energy Scotland would be attending the June meeting to provide detail on alternative examples of community energy models that might meet the aspirations of individuals and communities in Kintyre

(h) **FUTURE DEVELOPMENTS**

No update but to remain on Agenda.

(i) **KINTYRE WAY**

The Chair advised that John Bakes had sent his apologies.

Councillor Horn reported that the 2 new Kintyre Way employees were in place and that an introduction at a future KIWG meeting would be arranged.

(j) **CHORD**

Ishabel Bremner reported on the following:-

13-15 Kirk Street - completion was envisaged by June 2013.

50-52 Main Street - developers had provided costs

Berthing Facilities - Full Business Case prepared with a planning application to Marine Scotland and Crown Estates.

The Chair advised that a CHORD Project Board meeting was being held on 1 May and further discussion would be given to the issue of the berthing facility.

5. BUSINESS ENVIRONMENT

(a) **HIGHLAND AND ISLANDS ENTERPRISE (HIE)**

David Rogers reported on funding for the Jura Community shop.

(b) **BUSINESS GATEWAY**

Barbara Halliday tabled a report for the group.

The Chair enquired if any enquiries had been made by members of the farming community. Barbara Halliday replied that she had not received any enquiries and it was agreed that she would make

contact with Chris Haran (NFU) to help promote Business Gateway. In addition, it was agreed Barbara she would make contact with Matthew Willis to arrange a visit to the MACC site.

The Chair advised that Mary Dott's post would come to an end shortly. He expressed thanks on behalf of the KIWG to Mary and highlighted the excellent work she had undertaken and progress she had achieved in her time as Town Centre Manager.

(c) **ARGYLL COLLEGE**

Darlene Russell informed the group that the recruitment process for Full time courses commencing August 2013 at Argyll College had begun.

She reported on 2 new courses an HNC in Hospitality and Agriculture; the HNC in Agriculture could be networked. Darlene advised of the accreditation of the Fire Service's Young Fire Fighters certificate which would be implemented in August 2013. Darlene detailed an example of local success; the Schools for Work Award which had been won by a local student in Tarbert.

Darlene would provide information on forthcoming Open Days at Argyll College. She detailed another initiative which was focusing on skill sets for the Commonwealth Games in 2014 and these would include Security qualifications, Customer Care and Hospitality.

Ishabel Bremner reported on the new Argyll and Bute Employability Partnership Group which was an action-based partnership endeavouring to match local skills to potential employers. She advised that the Principal of Argyll College was one of the Board members.

6. COMMUNITY DEVELOPMENT

(a) **THE WEE PICTURE HOUSE CENTENARY**

Jane Mayo reported on the forthcoming celebrations to mark the Centenary of the Wee Picture House in Campbeltown. She informed the group of the history behind the building of the cinema which had been pioneered and completed by a group of local businessmen.

Jane highlighted the support and contribution from Argyll and Bute Council, the Common Good Fund and the local Rotary Club towards the celebration and thanked all concerned.

The event was being held on 26 May and 164 tickets would be available on a first come first served basis from 4 May. These would be limited to 4 per person with a voluntary donation towards costs. There would be 100 invited guests and the guest of honour was - Liz Lohead, Scottish Makar.

The weekend of celebration would coincide with the Mull of Kintyre Run and the Mull of Kintyre Music Festival.

Jane Mayo advised of on-going discussion with the newly appointed architect and of a forthcoming meeting with Heritage Lottery. She reported that a new Stage 1 application would be submitted with more fund raising initiatives in the pipeline. One of which was for Jane to compete in the Mull of Kintyre run and it was agreed that sponsorship forms on behalf of Jane would be sent out to the KIWG electronically.

(b) **MACHRIHANISH COMMUNITY FACILITY**

Matthew Willis refuted comments made on Radio Scotland during the recent severe weather in Kintyre which reported on generators at the base which were connected to the grid. He reported that the said generators were not connected and were in the process of being disposed of.

Jim Martin advised that £300,000 had been spent on infrastructure at the base utilising the services of local contractors. He updated the group on other enquires which had been received at MACC.

Councillor Horn took this opportunity to highlight the positive stories during the Kintyre Emergency and thanked all the services who assisted during this onerous time. The Group conveyed their gratitude to all involved.

(c) **OPPORTUNITY KINTYRE**

Tracy Grant informed the group of an application made by Opportunity Kintyre to the People and Communities Fund.

In addition, plans were in progress to work with Business Gateway and a meeting was planned.

(d) **SOUTH KINTYRE DEVELOPMENT - UPDATE**

Update given at Item 4 (c).

7. MAKI COMMUNITY PLANNING GROUP

(a) **MAKI COMMUNITY PLANNING GROUP - MEETING DATE**

The next MAKI CPG meeting was scheduled for:-

5 June, 2013.

The venue would be decided at the next MAKI Area Committee meeting.

8. A.O.B.

Councillor Horn advised the group of a forthcoming event in Tarbert. The event was called Medieval Melee and was scheduled for 1 June.

This would be a good family day and would commence at 10.00a.m. with the official opening taking place at 12 noon.

Susan Paterson provided detail of the St Columba event in Southend on 1 June. This would involve plays and pageants relating the local history of Southend, culminating in a ceilidh. The day would start at 1.00p.m. and continue to 11.00p.m.

Susan provided information of a Community Care Forum in Campbeltown Library on 8 May. This would focus on the service provision of the new MacMillan Information and Support Group.

Alan Reid reported on the new Mobile Infrastructure contract which would be awarded in May 2013. It was agreed that he would notify the Chair of the announcement.

Jim Martin enquired if the Relief Road at the Rest and Be Thankful was now fully operational. Stewart Clark replied that, to the best of his knowledge, this was ready for use if needed.

The Chair thanked everyone for their attendance and input.

9. DATE OF NEXT MEETING

The next meeting would be held on:-

**Friday, 28 June 2013
10.00a.m. Town Hall, Campbeltown**

This page is intentionally left blank

ARGYLL AND BUTE COUNCIL

Community Planning Group -
Mid Argyll, Kintyre & Islay

COMMUNITY SERVICES: EDUCATION

5TH JUNE 2013

EDUCATION STANDARDS AND QUALITY REPORT

1.0 SUMMARY

- 1.1 This report is to update the Community Planning Group on the progress being made within Education in Argyll and Bute. Details are based on the Standards and Quality Report for 2011/12. Full report can be viewed on Argyll & Bute Council website <http://www.argyll-bute.gov.uk/education-and-learning/education-performance-and-standards>

2.0 RECOMMENDATIONS

- 2.1 It is recommended that the Community Planning Group note the progress made in relation to Education within Argyll and Bute.

3.0 DETAIL

- 3.1 *Summary excerpts from the Education Standards and Quality report.*

3.1.1 How do HMIE rate our schools?

In session 2011/12, HMIE conducted inspections in one secondary school, one joint campus and five primary schools. Out of a total of forty quality indicators, 92.5% were rated as good or better. Our target measure of 75% of all quality indicators being rated as good or better was exceeded.

3.1.2 Skills for Work and Alternative Qualifications on Offer 2011/2012

Over the last 5 years central education staff have worked in partnership with secondary schools and their local learning communities to support them to offer a greater range of alternative qualifications and wider opportunities to young people in order to help them move into a positive and sustained destination. In session 2011-2012 a total of 621 pupils took part in Skills for Work across our 10 secondary schools and 1386 young people opted to study alternative qualifications.

3.1.3 Leaver destinations

Out of 985 leavers 885 have progressed to “positive destinations”. This includes those who are in training, employment, further or higher education.

3.1.4 **Scottish Education Awards**

Argyll and Bute continues to perform well in the National Awards with an increased level of entries this year. This national recognition raises the profile of our schools, pupils and staff.

2012 Finalists from Argyll and Bute

- **Learning Through Technology Award: Winner**
Port Ellen Primary School
- **Learning Through Technology Award: Finalist**
Hermitage Primary School
- **Educational Supporter of the Year: Winner**
Alison Robertson, Furnace Primary School
- **Enterprise and Employability Across Learning Award (Primary and Early Years): Finalist**
Kilmodan Primary School
- **Head Teacher of the Year: Finalist**
Alison Palmer

3.1.5 **Learning and Teaching**

Across the authority there are many examples of developing practice in active learning at the early years. Kilninver Primary nursery and P1-3 staff jointly plan and present learning linked across pre-five to primary. Luing Primary organise learning within an Early Level Class, much of which is explorative and experiential in nature. Park Primary early level staff jointly plan to deliver active and challenging learning experiences through imaginative interdisciplinary themes.

The authority has engaged secondary schools in restructuring their S1-S2 and in some cases S3 curriculum to provide a broader general education.

Various Literacy initiatives continue to promote active learning. Almost all teachers across Argyll have been trained in “Big Writing”, an interactive approach to teaching writing that has shown an increase in extended writing, especially from boys.

Cluster planning involving primary and secondary staff is further developing the P7-S1 transition model. Pupils now engage in an extended transition programme with learning delivered by teachers from both sectors working together, eg. Hooked on Hermitage, PSEd residential in Cowal, P5-S1 Interdisciplinary planners in Lorn.

Teaching and Learning Communities (TLCs) are now well established in a large number of schools. These are structured teacher sharing and development workshops focusing on the development of classroom practice by the teachers themselves. TLCs are increasing staff confidence in Assessment is for Learning and other pedagogies.

17 projects were funded across the Authority designed to bring staff together to share practice and moderate standards. For example, Islay cluster of schools set up a local system to moderate standards of

learning, teaching and attainment in writing. Ardrishaig Primary early years staff set up dialogue groups with partner pre-five establishments to ensure continuity of progression into P1.

Across the authority there are many examples of developing practice in active learning at the early years. Kilninver Primary nursery and P1-3 staff jointly plan and present learning linked across pre-five to primary. Luing Primary organise learning within an Early Level Class, much of which is explorative and experiential in nature. Park Primary early level staff jointly plan to deliver active and challenging learning experiences through imaginative interdisciplinary themes.

CLD Youth Service team members are working closely with schools to provide a range of alternative curriculum activities, including Princes Trust XL, ASDAN courses, Pupil Support / Alternatives to Exclusion, Peer Education Projects, PSD and Youth Achievement Awards.

Co-operative Learning Academies continue to be organised. Thirty teachers were trained last session. There is evidence through school reviews and quality improvement officer visits to classrooms of regular pupil engagement in co-operative learning.

Development of a Creative Learning Network. This allows partnerships to develop between teachers and artists based on mutual understanding of each other's needs. Continuing Professional Development (CPD) is offered within this forum focusing on the skills development of teachers and artists.

Development of MuBu for learning of music in primary aged children. This after school central approach allows children often from small primary schools, to learn with peers, and to have a group learning session, deepening understanding of a real breadth of musical concepts.

E Portfolios have been piloted and trialed in selected schools for P7 profiles.

3.1.6 Curriculum developments

Schools are looking at timetabling S4-6 together where pupils are able to follow courses based on ability, not age (Islay High School).

Schools are timetabling to allow College links to be built in (provide full day or half day options).

National development officers and head teachers from other authorities have attended conferences in Argyll and Bute and provided the national perspective.

3.1.7 Skills for learning, life and work

Argyll and Bute Council put together a working group to look at how the authority would take forward Building the Curriculum 4 (Skills development within the curriculum). This group developed a framework document for teachers and partner agencies to use along with a pictorial visual – The ABC Skills Tree. All schools have been issued with the framework, poster copies of the Skills Tree and CPD sessions have been organised to build capacity of knowledge and understanding with regards to skills for learning, life and work.

An on-line version of the Skills Tree has been developed so that pupils can record electronically how they are developing skills for learning, life and work both in the classroom and through their after school participation. This on-line version is being piloted with pupils across Cowal schools during the current academic session. The on-line version covers achievement, pupil-profiling at the key stages highlighted under Curriculum for Excellence.

3.1.8 Health and wellbeing

Relationships, Sexual Health and Parenthood training for secondary teachers/

Substance misuse – “Natural High” programme delivered to S1 and S2 pupils and “Smoke Free Me” delivered to P7 and some P6 pupils.

Substance misuse training delivered jointly to staff in 3 secondary schools with Argyll and Bute’s Alcohol and Drugs Partnership.

Schools, in conjunction with educational psychology services, have implemented universal approaches to mental health and wellbeing including whole class approaches to anxiety and depression.

3.1.9 Active Schools, Sports Development and Leisure Services

Participation in sport and physical activity has continued to rise with 778 extra-curricular clubs being delivered across the academic year in primary and secondary schools supported by over 600 volunteers ranging from teachers to parents, students, community coaches and senior pupils.

3.1.10 World of work, enterprising activities and culture

Work Based Vocational Learning – In light of the changing world in which we live in and the fact that young people will change employment far more frequently in their lifetime Argyll and Bute Council re-examined how pupils were engaging in the world of work during their senior phase of education. A greater emphasis is now placed on individualised placements that reflect young people’s future career goals and aspirations. The range and diversity of work based placements available to school pupils across Argyll and Bute was used as a case study by Education Scotland.

3.1.11 Leadership

An authority developed leadership programme for aspiring leaders and those wishing to refresh their skills in team leadership has enrolled 42 teachers.

3.1.12 Self-evaluation

The authority has restructured its approach to School Review and aims to develop capacity in its schools for self-evaluation. This will be achieved through meaningful and regular partnership working between quality improvement officers and head teachers, with rigorous professional dialogue driving a school's ability to reflect on its practice and affect necessary improvement. Two pilots have taken place which are due to be evaluated.

3.1.13 Multi-agency working

The Education Service participated in phase 1 of Early and Effective Intervention (EEI), which was launched in November 2011. EEI is a multi-agency response to police generated concerns around children and young people. Phase 1 addressed the issue of youth offending. Getting It Right for Every Child (GIRFEC) was formally launched across the Argyll and Bute authority area in January 2012. GIRFEC aims to improve practice between services such as education, health, social work and police to ensure that all children and young people get the support they need when they need it. A new single agency plan was introduced which introduced the use of 'My World Triangle' to assess a child's needs.

4.0 CONCLUSION

4.1 Quality and Standards across Education continues to be reported on an annual basis.

4.2 The next Standards & Quality Report will be due Autumn 2013 reporting on progress in session 2012/13.

5.0 IMPLICATIONS

- 5.1 Policy – N/A
- 5.2 Financial – N/A
- 5.3 Legal – N/A
- 5.4 HR – N/A
- 5.5 Equalities – N/A
- 5.6 Risk – N/A
- 5.7 Customer Service – N/A

Executive Director of Community Services

26 April 2013

For further information contact:

Matthew Boyle

Quality Improvement Officer

Email: matthew.boyle@argyll-bute.gov.uk

Telephone: 07795 645042

COMMUNITY PLANNING GROUP

5 JUNE 2013

HEALTH IMPROVEMENT CONSULTATION

Alison McGrory, Health Improvement Principal, Argyll and Bute CHP

The Area Community Planning Group is asked to:

- **Note this paper**
- **Read the draft Joint Health Improvement Plan for Argyll and Bute**
- **Provide feedback on the template provided by Friday 14 June 2013**
- **Consider their role in relation to health improvement in Argyll and Bute**

1 Background and Summary

The Health and Wellbeing Partnership has considered how health and wellbeing is delivered in Argyll and Bute and has decided to develop a Joint Health Improvement Plan (JHIP) for the period 2013 – 2016. This plan is open for consultation from 29 April till 14 June 2013. The JHIP will replace the Outcome Focussed Plan for health improvement which expired in 2011.

2 Joint Health Improvement Plan

A partnership approach is adopted for health and wellbeing in Argyll and Bute. The Health and Wellbeing Partnership meets 4 times per year and has renewed terms of reference and membership, implemented in January 2013.

The draft JHIP sets out arrangements for how health and wellbeing is delivered in partnership in Argyll and Bute and how this is reported to the Community Planning Partnership.

A number of strategic priorities have been identified, they are: alcohol and drugs, early years, health inequalities, healthy weight, mental health, older people, teenage transition and tobacco. Guidance is provided on these topics to enable the 7 local Health and Wellbeing Networks to develop local action plans for health and wellbeing.

3 Requirement for a preventative approach to service delivery

Due to the demographic changes occurring in Scotland, alongside ongoing economic challenges, it has been recognised that a preventative approach to how public services are delivered is essential to our economic prosperity.

The case for action:

“A cycle of deprivation and low aspiration has been allowed to persist because preventative measures have not been prioritised. It is estimated that as much as 40 per cent of all spending on public services is accounted for by interventions that could have been avoided by prioritising a preventative approach. Tackling these fundamental inequalities and focussing resources on preventative measures must be a key objective of public service reform.”

Report on the Future Delivery of Public Services, Christie, 2011

This page is intentionally left blank

Being the healthiest we can be in Argyll and Bute

Joint Health Improvement Plan 2013 – 2016.



Vision:

Everyone in Argyll and Bute has the right to lead the healthiest and safest life possible. Whether that means being empowered to make healthier lifestyle choices; being able to access opportunities and services for health and wellbeing locally; or having the skills and resources to manage your own health, health improvement is in everyone's best interest.

The Health and Wellbeing Partnership supports the planning of health improvement in Argyll and Bute.



7 local Health and Wellbeing Networks throughout the area in:

- Bute
- Cowal
- Helensburgh
- Islay
- Kintyre
- Mid Argyll
- Oban and the Isles

The Health and Wellbeing Networks are for people with an interest in building healthy communities. They provide an opportunity for people to come together to find out what issues matter to local communities; to plan activities and events together; and to distribute grant funding to local projects. **Each of these networks has allocated co-ordination time funded by the NHS.**

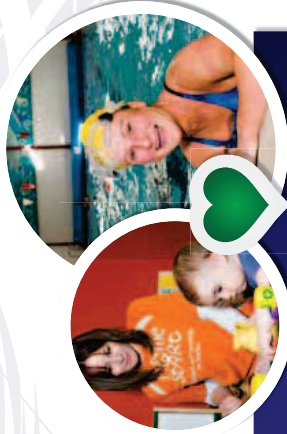
Partnership working structures:

In Argyll and Bute this includes: staff from the NHS, such as health improvement, public health, health visiting and community nursing, staff from the Council, such as social work, education and leisure services; staff from the Third Sector, such as voluntary organisations and housing associations; and equally as important, local people.

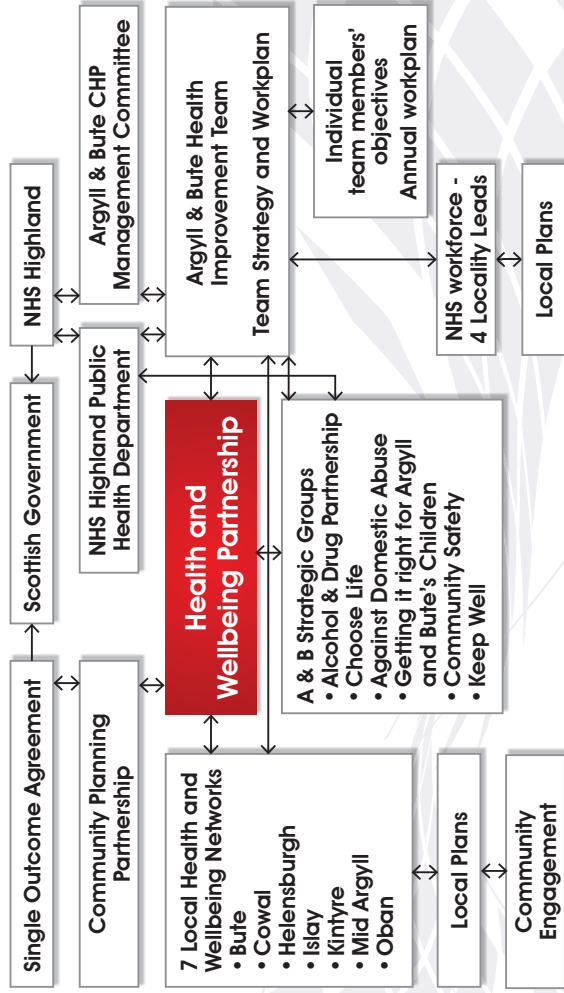
The Health and Wellbeing Partnership will also work with other groups such as the Alcohol and Drug Partnership, the Domestic Abuse Partnership, Getting it Right for Argyll & Bute's Children and the Community Safety Partnership.

Contents

How we deliver health improvement in Argyll & Bute	2
Outcomes	4
Strategic Priorities	5
Health & Wellbeing fund	9
Case studies	10



This document has been developed by the Health and Wellbeing Partnership in consultation with our members and the Health Wellbeing Networks. It has been designed to be used by people who are involved in health improving activities, for example it may help to inform what can be done to improve health by giving examples of what has worked elsewhere or it can be used to show how health improvement fits within the bigger picture in Argyll and Bute. For up to date details of who to contact for information or advice please visit our website at www.healthargyllandbute.org.uk



The following values and principles underpin how health improvement is delivered:

- Empowering
- Sustaining
- Participative
- Equitable
- Evidence based
- Well planned
- Effective

Where health improvement happens:

Health improvement can happen anywhere and at any stage of life, for example, early years, young people, adults and older people, and can take place in a variety of settings and communities, such as:

- NHS premises
- Schools
- The workplace
- Geographical communities
- Communities of interest, such as social clubs, churches etc.

What we will do:

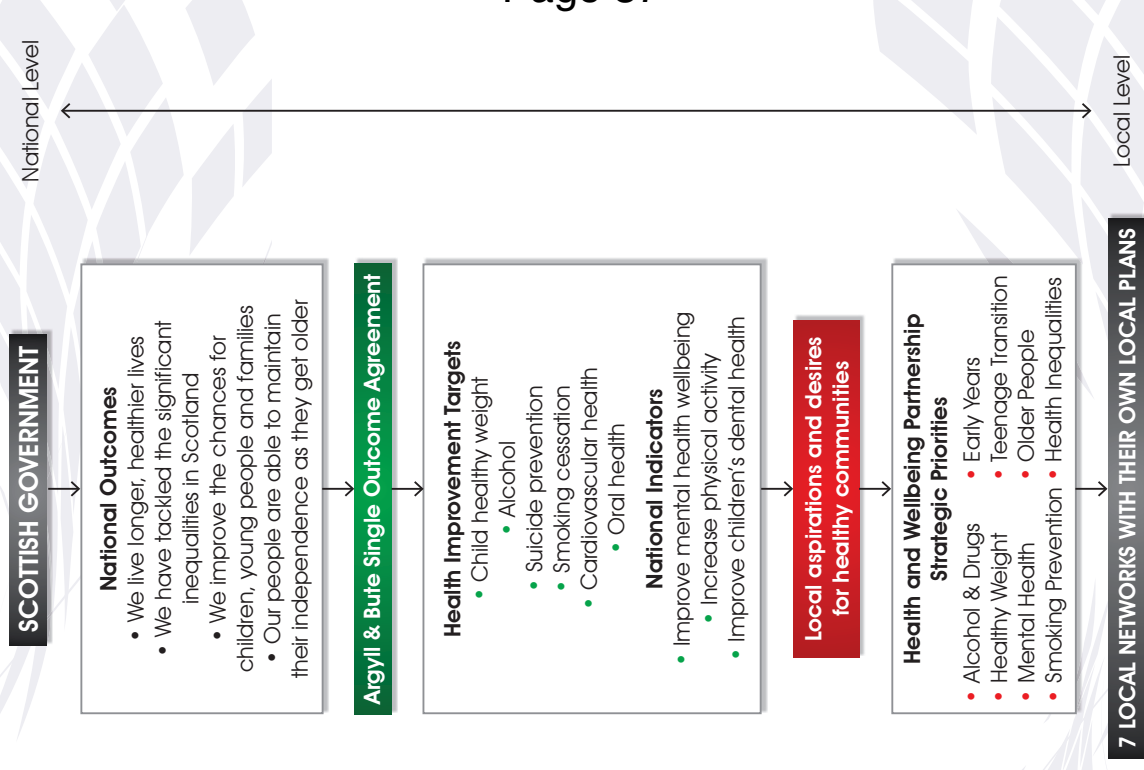
Current thinking around health improvement suggests that healthy people arise from healthy communities. Interventions work best if they are done with local communities and they build on assets and resources already present in these communities. This is known as "salutogenesis" or an "assets based approach" and the Health and Wellbeing Partnership favours this model. It involves engaging local communities in finding out what health issues matter to them and responding to what they want.

It also involves breaking down boundaries and not looking at topics such as smoking or harmful drinking in isolation from other factors in health, such as poverty, employment status, educational attainment etc.

For more information on health improvement in Argyll and Bute, visit www.healthymarilandbute.org.uk



This Joint Health Improvement Plan sets out what we want to achieve for a healthier Argyll and Bute. The intended outcomes are informed by national outcomes and locally agreed measures in the Single Outcome Agreement. The following diagram illustrates how the national outcomes inform local activity.



• Bute • Cowal • Helensburgh & Lomond • Islay • Kintyre • Mid Argyll • Oban Lorn & The Isles

Strategic Priorities for Health Improvement in Argyll and Bute:

The following strategic priorities were agreed by the Health and Wellbeing Partnership during 2012. The detail provided for each topic is to give guidance, direction and help to inform local action plans. It is not designed to be a menu of options.

Health Inequalities

Health inequalities is relevant to all of the strategic priorities and we should all be asking how "inequalities sensitive" our health improvement practice is, for example, are those most in need benefiting from the activity. Equality and diversity impact assessments can help with targeting interventions to those most in need.

Areas to consider:

- An "assets" based approach to investing in healthy communities
- Social determinants of health eg housing, access to employment, access to services, income etc.
- Gender, age, race etc.
- Physical health eg long term health conditions, disability, mental wellbeing etc.
- Areas of deprivation
- Keep Well cardio-vascular health checks
- Health literacy
- Identify gaps in service provision

Why we should do this:

- Equally Well, Scottish Government 2009
- Argyll and Bute SOA

Alcohol and Drugs

Why we should do this:

- Changing Scotland's Relationship with Alcohol, 2009
- Locally – Argyll and Bute Alcohol and Drug Strategy 2013 – 2016
- The Road to Recovery: A New Approach to Tackling Scotland's Drug Problem, 2008
- HEAT target

Examples of activity:

- Diversionary activities for young people who might otherwise consume alcohol
- Alcohol and drug training eg brief intervention training and awareness raising workshops on Legal Highs
- Support for people with alcohol and drug problems eg NHS ABAT; third sector organisations such as Encompass; and voluntary groups such as AA
- Community support eg opportunities for people recovering from alcohol or drug dependency to participate in activities that help them re-engage with their community
- Promotion of alcohol free products eg Octoberfest
- Keep Well health checks

How we measure our achievements:

- Case studies local activities and qualitative feedback – specifically link to monitoring of grant recipients
- Local intelligence eg numbers attending training/events and evaluation of these events
- Argyll and Bute CHP Health Profile:
 - Patients hospitalised with alcohol related conditions
- Patients hospitalised with drug related conditions
- Deaths from alcohol
- Numbers of establishments achieving the *healthy/living* and Healthy Working Lives Awards
- Numbers of people treated in support services
- Single Outcome Agreement (SOA) and Pyramid system

Early Years

Why we should do this:

- Scottish Government National Outcome – We improve life chances for children, young people and families
- The Early Years Framework – Scottish Government 2009

Examples of activity in Argyll and Bute:

- Parenting programmes using a co-production model
- Breastfeeding promotion eg peer support volunteers
- Active play
- Read at home
- Support services eg Homestart; family mediation
- Parent and toddler groups and play park

How we will measure our achievements:

- Case studies of local activities and qualitative feedback - specifically link to monitoring of grant recipients
- Local intelligence eg numbers attending training/events and evaluation of these events
- Argyll and Bute CHP Health Profile:
 - Mothers smoking during pregnancy
- Teenage pregnancies
- Low weight live births
- Babies exclusively breastfed at 6 - 8 weeks
- Child dental health in primary 1
- Child obesity in primary 1
- Single Outcome Agreement (SOA) and Pyramid system

Healthy Weight

Why we should do this:

- Recipe for Success: Scotland's National Food and Drink Policy, Scottish Government, 2009
- Preventing Overweight and Obesity in Scotland, Scottish Government, 2010
- Commonwealth Games legacy
- Let's Make Scotland More Active, Scottish Government, 2003

Examples of activity:

- Promotion of opportunities for physical activity eg health walks, Argyll Active exercise referral, active schools, sports and leisure services
- Open space which supports physical activity eg community woodlands, community gardens and playparks
- Development and promotion of pathway for weight management in Argyll and Bute
- Cookery classes for in need groups eg parents, men, young people
- *healthy/living* award for catering establishments, including workplaces
- Healthy Working Lives Programme for workplaces
- X programme for children and families
- Build front line capacity through training programmes such as motivational interviewing and brief interventions

How we measure our achievements:

- Case studies local activities and qualitative feedback – specifically link to monitoring of grant recipients
- Local intelligence eg numbers attending training/events and evaluation of these events
- Argyll and Bute CHP Health Profile:
 - Patients hospitalised with coronary heart disease
- Numbers of establishments achieving the *healthy/living* and Healthy Working Lives Awards
- Numbers of people participating in activities eg weight management
- Single Outcome Agreement (SOA) and Pyramid system

Mental Health and Wellbeing

Why we should do this:

- Mental Health Strategy for Scotland 2012 – 2015
- Locally – Strategic Framework Mental Wellbeing 2012 – 2014
- National Strategy and Action Plan to Prevent Suicide in Scotland: Report of the National Suicide Prevention Working Group (Refresh, 2010)

Examples of activity:

- Social prescribing for mental health problems eg peer to peer support or exercise referral
- Awareness raising activities eg how to look after your mental health or suicide and self harm awareness in communities
- Scottish Mental Health Arts and Film Festival

How we measure our achievements:

- Case studies of local activities and qualitative feedback – specifically link to monitoring of grant recipients
- Local intelligence eg numbers attending training/events and evaluation of these events

- Responding to Self Harm in Scotland: Final Report
- National indicator – improve mental health and wellbeing
- Mental health literacy - "No health without mental health." (WHO)

- Training eg Mental Health Awareness, Living Life to the Full and Suicide Prevention
- Physical activity eg walking groups
- Healthy Working Lives Programme
- Community based activity eg link clubs, Alzheimer's football interest groups etc
- Promotion of information resources eg service directories or self management websites

How we measure our achievements:

- Argyll and Bute CHP Health Profile:
 - Patients prescribed drugs for anxiety/depression/psychosis
 - Patients with a psychiatric hospitalisation
 - Deaths from suicide
- Single Outcome Agreement (SOA) and Pyramid system

Older People

Why we should do this:

- Reshaping Care for Older People, Scottish Government 2011

Examples of activity:

- Lunch clubs
- Community support such as befriending services or shopping help
- Intergenerational activities eg community choir in Helensburgh

How we measure our achievements:

- Case studies local activities and qualitative feedback – specifically link to monitoring of grant recipients
- Cross reference to outcomes for workstream7 for Reshaping Care for Older people in Pyramid
- Local intelligence eg numbers attending training/events and evaluation of these events

- National outcome – people maintain their independence as they get older

- Timebanking/volunteering
- Falls prevention work eg strength and balance training and active ageing
- Support self management of long term conditions eg support groups

How we measure our achievements:

- Argyll and Bute CHP Health Profile:
 - People (65+) with intensive care needs met at home
 - People (65+) receiving free personal care at home
 - Patients (65+) with multiple hospitalisations
 - Patients (65+) hospitalised after a fall in the home

Smoking Prevention

Why we should do this:

- Scotland's Future is Smoke free: A tobacco prevention action plan (Scottish Government 2008)

Examples of activity:

- Promotion of Smoking Cessation Campaigns
- National No Smoking Day
- Smoke Free Homes and Cars
- Smoke Free Campaign (Schools)
- Healthy Working Lives
- Healthy Living Group/Health Passport (A&B Hospital)
- Training eg Raising the Issue of Smoking and Brief Interventions
- Fire safety

How we measure our achievements:

- Case studies local activities and qualitative feedback – specifically link to monitoring of grant recipients
- Local intelligence eg numbers attending training/events and evaluation of these events
- Argyll and Bute CHP Health Profile:
 - Smoking prevalence
 - Smoking attributable deaths
- Smoking cessation rates from the NHS Scotland Smoking Cessation Database (SD)
- Single Outcome Agreement (SOA) and Pyramid system

Teenage Transition

Why we should do this:

- Respect and Responsibility (Scottish Government 2008)
- Youth Employment Strategy (Scottish Government 2012, draft)

Examples of activity:

- 16+ learning choices
- Diversionary activities for young people who may experiment with alcohol and drugs
- Access to free condoms
- Sexual health and relationships education
- Support groups for young parents
- Community sports groups and access schemes eg Midnight Football League
- Looked after and accommodated children
- Young Scot
- Saltire Awards

How we measure our achievements:

- Case studies local activities and qualitative feedback – specifically link to monitoring of grant recipients
- Local intelligence eg numbers attending training/events and evaluation of these events
- Argyll and Bute CHP Health Profile:
 - Teenage pregnancies
 - Working age adults with low or no educational attainment
- Single Outcome Agreement (SOA) and Pyramid system

Health and Wellbeing Fund

Argyll and Bute Community Health Partnership allocates approximately £70,000 from its Public Health budget each year to support community led health improvement activities. This budget is devolved to local networks to distribute as they see fit using agreed selection criteria. The following strategic priorities are eligible for grant funding:

- Alcohol and drugs
- Early years
- Health inequalities
- Healthy weight
- Mental wellbeing
- Older people
- Smoking prevention
- Teenage transition

Hundreds of initiatives have received funding over the years in Argyll and Bute. Recipients range from one off events such as a cookery class or an information resource for carers to supporting ongoing activities such as a befrienders group for older people or swimming lessons for disabled adults. Potential applicants can find out more about how to access the grant fund by joining their local network. For details see www.healthargyllandbute.org.uk

In order to be effective, health improvement activities must balance the needs and aspirations of communities with what the evidence and experience shows can make a difference. The geography of Argyll and Bute means that local communities can have distinct needs and this has resulted in a very diverse range of services across the area. Just because something has been shown to work in one area does not mean it will work in another area. However, strategically those responsible for planning and commissioning services have a duty to ensure equity of services and funding allocations across Argyll and Bute.

The Health and Wellbeing Partnership favours the use of a co-production model to develop services. Co-production means service providers working in equal partnership with local communities to develop services. Local communities know best what their needs are.



Case study 1

The Health and Wellbeing Partnership has compiled a number of case studies of successful health improvement initiatives in Argyll and Bute. These can be viewed on our website. A small number are provided as examples on the next pages.



Helensburgh Challenger Sailing for Disabled People

Helensburgh Challenge Group supports disabled adults to take up or continue sailing. The group uses specially designed boats which will not sink or turn over.

Those new to sailing just love the “buzz” and feeling of wellbeing out at sea. This is particularly exhilarating when they are perhaps adjusting to lack of mobility. One member described the experience of sailing as providing a sense of freedom - that you just can't get with a wheelchair. Sailors who took part in competitive sailing in the past but who have suffered spinal injury find that the Challenger boats provide that same outlet for their competitive spirit. Older sailors too, can continue to enjoy the challenge of sailing into later life allowing them the health benefits of an active life.

A recent purchase of a launching trolley through the support of the Health and Wellbeing Network has made a huge difference to the club. The club has a network of volunteer helpers, including some students undertaking the Duke of Edinburgh Community Award. The helpers, with the aid of a hoist can assist those with a disability into the boats.

What people said about this:

“Helensburgh Challenger Group was the first to be founded in Scotland in 1983. We also claim to have the oldest Challenger sailor in the UK, Mr Alex Richardson from Rhu who is aged 91. He was featured in the Helensburgh Advertiser, with a picture taken out on the water.”
Club secretary

“It's tremendous - I've been sailing for 12 years now. I never would have thought I'd be out on a boat! When I first had MS I saw the advert for the club and thought that looks good. Went along to the meeting and spoke to a 72 year old who had been up the Rhu Narrows and thought if they can do it so can I.. So I joined up. I would it recommend to everyone - the thrill is just fantastic!”
Club member

Contact details:

www.helensburghsailingclub.co.uk

Case study 2

Scottish Mental Health Arts & Film Festival

Being creative and joining in with groups and activities has a positive influence on mental health & wellbeing. It was with this in mind that the Health and Wellbeing Network on Bute supported the Scottish Mental Health Arts and Film Festival.

The festival kicked off with an animated film, Mary & Max which was a film that highlighted a range of emotions, behaviours and mental health issues in a moving, sometimes funny and sometimes sad way as it described the unlikely friendship between two people who live continents apart.

The MAD about Arts Day was organised to coincide with the national Make a Difference Day (MAD Day). All local arts & crafts groups and some other local activity groups were invited to come along and many took the opportunity to organise activities and tasters for participants to get involved.

19 groups with 38 volunteers took part in the day, resulting in an energetic day as young and old tried out a whole range of activities, such as jewellery making, painting, felt making, knitting, badge making, bird feeders, card making and mask making.

A directory was produced for the day, listing all the arts, crafts and music groups on the island with details and contact numbers. Also listed were the numbers of the national helplines, Samaritans, Breathing Space, Childline, NHS 24 and Emergency Services.

What people said about this:

"MAD about Arts provided an excellent opportunity to raise awareness of the creative activities that were available on the island and to highlight the benefits of involvement and participation in relation to mental health and wellbeing"

"It was great to see so many people involved and making links and relationships and commitments to go along to groups and activities in the future!"

"It was good to have such an event to encourage people along to. When individuals are feeling isolated it can be hard to make that step to join a group – here the groups really came to the people"

Contact details:

Dee Hancock – Bute health and wellbeing network co-ordinator
bhwn@homestartmajik.eclipse.co.uk
www.mhfestival.com

Case study 3

Crèche Places at the Home-Start Soft Play facility

Home-Start and KADAS, partners involved in the Kintyre Health and Wellbeing Network got together to improve the lives of children affected by parental substance misuse.

Funds secured through the Argyll & Bute Alcohol and Drugs Partnership enabled both agencies to offer parents free crèche places. All the parents targeted required support to access services and would benefit from time away from the demands of their children. They were already using recovery services, or experiencing difficulties associated with substance misuse and some were users of Home-Start's home visiting service.

In a 12 month period 441 individual sessions were booked by parents. The crèche is located in the Home-Start soft play area in the local leisure centre.

Parents were able to attend appointments with support services eg counselling, complementary therapies, social work and health visitor appointments, including meetings arising out of concerns that the parent could not fully provide for their child's needs.

This has proved a really positive experience. For some parents, beginning to create a network of support in the community is often the beginning of breaking down the isolation they have experienced.

What people said about this:

"It was very helpful being able to use the crèche. It helped me through a difficult time" **Parent**

"Parents in recovery or at risk of developing problematic use can be encouraged to take up an activity as part of a lifestyle change. With the crèche situated in the leisure centre and the support provided by Home-Start volunteers it has been an easier "step to change and recovery" for some of our parents." **KADAS Manager**

"Parents affected by substance misuse sometimes find it hard to cope with full time care of their children. Having child free time to participate in positive structured activities, often allows them to cope with family stress better and feel more ready to cope with the demands of parenthood."

Home-Start co-ordinator

Contact details:

Eleanor Sloan – Kintyre Health and Wellbeing Network - eleanor@homestartmajik.eclipse.co.uk
www.argyllcommunities.org - www.stad.org.uk

Case study 4

Cowal Forestry for Health project

Green Gym programmes aim to provide people with a way to enhance their fitness and health while taking action to improve the outdoor environment. It can be seen as enabling people to get fit who would not normally attend a conventional gym or sports centre.

HELP staff got their young people involved in a local Forestry for Health programme. The young people joined the existing forestry project. Transport was provided to the site and the group was a mix from various local projects including the mental health support group, the Link Club. Some people attended occasionally, others more regularly. Out of an average group of 12 travelling together 4-6 were young people.

The group worked with local trainers from a recent Green Gym initiative and:

- undertook a variety of outdoor jobs which improved the biodiversity, accessibility and appearance of our site
- learned how to improve strength and stamina, including the benefits of warm-up and cool-down exercises
- found out more about local opportunities for physical activity (such as other local environmental volunteering, sports and walking)

Funding from Cowal Health and Wellbeing Network was matched to extend the post of the forest ranger to give her the time to work with this group. Agencies whose clients were attending the project were able to supply mentor support where needed. The aim is to continue the work and extend the Forestry for Health Initiative and providing further opportunity for volunteers to undertake qualifications.

What people said about this:

"The experience, the social interaction and the benefits of just being outdoors have led to an improved lifestyle, confidence and sense of wellbeing in some of our most vulnerable clients"

"You don't need designer sportswear or an indoor gym – you can exercise outdoors anytime with the same results. Treadmill or Promenade! No need to worry about whether you have enough money to go and you can go whatever the weather."

Contact details:

Lorna Ahlquist – Cowal health and wellbeing co-ordinator - lornaahl@aol.com
www.argyllcommunities.org
www.forestry.gov.uk

Case study 5

Craignish Community First Responder Scheme

What do you do if there's an emergency and you live more than 20 minutes drive away from the nearest ambulance station? Well, the residents of Ardfirn and the Craignish peninsula in Argyll raised the funds to start a Scottish Ambulance Service sponsored Community First Responder scheme. Volunteers run the service, providing a "bridge" between an emergency and the arrival of an ambulance. All volunteers receive specialist training and equipment so they can help during those first crucial minutes.

The volunteers provide a basic service that saves lives. Following a 999 call the ambulance is called out and, when appropriate, an additional call is made to the First Responder volunteer on duty. The scheme has a volunteer co-ordinator who manages the call rota, providing cover round the clock as much as possible.

Self-funded Community First Responder schemes, like Craignish, must purchase their own equipment and, with help from the Mid Argyll Health and Wellbeing Network they have been able to install a defibrillator at the village shop. They've also been working with the British Heart Foundation's Heart Start programme to raise awareness of the benefits of early recognition of heart problems and to raise awareness that lifestyle change is a preventative factor.

What people said about this:

"When our local GP suggested that due to the distance from the nearest emergency services, the Craignish peninsula would be an ideal candidate for Scottish Ambulance Service's First Responder Scheme, this seemed a very logical path to follow, particularly in our area where there is already a strong community ethos." **Volunteer**

"In a medical emergency it is often the simple first aid skills, like making sure an airway is clear, that save a life. In recent years, advances in technology have been made, and many interventions, which were previously performed only by highly trained individuals, are now available to people with much less training." **Spokesperson, Scottish Ambulance Service**

Contact details:

www.argyllcommunities.org
www.bhf.org.uk
www.scottishambulance.com



This page is intentionally left blank

Argyll and Bute Health and Wellbeing Partnership

Joint Health improvement Plan 2013 – 2016

Consultation Feedback – 29.4 13 to 14.6.13

The Joint Health Improvement Plan for Argyll and Bute has been developed by the Health and Wellbeing Partnership. Your views are sought on pages 2 – 9 of the document. It is expected that the plan will launch in July 2013.

Page 4: Health Improvement Outcomes

Do you agree with these outcomes and how they are represented? Please give any comments here:

Pages 5 – 8: Strategic Priorities

Do you agree with the 8 strategic priorities and how they are represented? Please give any comments here:

Further comments: Please give any further comments about the Health Improvement Plan here:

Name:
If Applicable – on behalf of what organisation
Address:
.....
.....
Email:

ARGYLL AND BUTE COUNCIL**MID ARGYLL, KINTYRE AND THE
ISLANDS AREA COMMUNITY
PLANNING GROUP****IMPROVEMENT AND HR****5 JUNE 2013**

ARGYLL AND BUTE COUNCIL DRAFT GAELIC LANGUAGE PLAN

1 INTRODUCTION

- 1.1 The council approved a draft Gaelic Language Plan for consultation in March 2013.
- 1.2 The plan sets out the commitments by the council for developing and supporting the Gaelic Language in line with the National Plan for Gaelic 2012-2017.
- 1.3 The council is seeking views on the draft plan prior to submitting in final format to Bòrd na Gàidhlig in July 2013.

2 RECOMMENDATION

- 2.1 That the Area Community Planning Group consider the draft plan and give comments to council representatives.

3 DETAIL

- 3.1 The council has a duty Section 2 of the Gaelic Language (Scotland) Act 2005 requires Bòrd na Gàidhlig to “prepare and submit to the Scottish Ministers a national Gaelic language plan”, and revised versions thereof “no later than 5 years after the date on which the most recent plan is published”.
- 3.2 Bòrd na Gàidhlig published the national Gaelic Language Plan, which sets out the priorities for local plans to cover.
- 3.3 The national plan has 3 overarching aims:
 - Arresting the decline in the overall number of Gaelic speakers in Scotland by increasing the number acquiring the language;
 - Expanding the range of situations in which Gaelic is used, in line with the Gaelic Language Act’s key principle of equal respect for Gaelic and English; and
 - Helping speakers of Gaelic, both learners and native speakers, to develop their competence and their confidence in using it, and ensuring that the language itself continues to be healthy and vibrant.
- 3.4 It seeks to do this by supporting Gaelic in the following areas:
 - Gaelic in the home
 - Gaelic in the community

- Gaelic in education
- Gaelic in the workplace
- Gaelic in the arts, heritage, media and tourism
- Gaelic in economic development

The council's draft plan identifies actions under each of these themes and seeks feedback from the Area Community Planning Group on the proposals.

The consultation process will also include use of the council's website, social media where appropriate and the network of Gaelic interest organisations to ensure that there is wide coverage of the proposals and that feedback is gathered.

4 CONCLUSION

- 4.1 The council's draft Gaelic Language Plan is presented to the Area Community Planning Group for comment and feedback as part of the consultation process.

5 IMPLICATIONS

Policy	The draft Plan contains a policy statement on the council's use of Gaelic
Financial	None
Personnel	Opportunities for expanding council employees' knowledge and use of Gaelic will be encouraged through training.
Legal	The draft plan complies with the Council's obligations under the 2005 Gaelic Language Act.
Equal Opportunities	The draft plan is compliant with the council's equalities policy

Jane Fowler, Head of Improvement and HR

For further information please contact:

Stephen Colligan, Improvement and Organisational Development Project Assistant

Tel: 01546 604472

APPENDIX 1

ARGYLL AND BUTE COUNCIL

COMHAIRLE EARRA- GHÀIDHEAL AGUS BHÒID

GAELIC LANGUAGE POLICY AND PLAN

PLANA GÀIDHLIG

Realising our potential together

Nì sinn le chèile gach nì a tha nar comas



Document Information

Title:	Gaelic Language Policy and Plan
Status:	Draft
Current version:	
Author:	Stephen Colligan, Jennifer Swanson, David Clements
Sponsor:	Jane Fowler
Consultation:	Consultation undertaken August 2012 – December 2012
Approved by:	Council
Approval date:	21/03/2013
Review frequency:	Annually
Next review:	Date of next review (03/2013)

Version History		
Version	Date	Description
1.0	06/08/2012	Approved by SMT and a working group set up to develop an associated action plan
2.0	21/03/2013	Final version presented to council for approval with accompanying action plan

Author: Improvement and Organisational Development, Improvement and HR
 Department: Chief Executive
 Date Approved: 21 March 2013 Argyll and Bute Council
 Date Amended:
 Version: 2.0

Table of Contents

1.	I
	INTRODUCTION.....	6
2.	S
	COPE	7
3.	P
	POLICY STATEMENT	7
4.	T
	THE NATIONAL CONTEXT	8
5.	A
	ARGYLL AND BUTE	10
6.	T
	THEMES	10
	<input type="checkbox"/> GAELIC IN THE HOME	10
	<input type="checkbox"/> GAELIC IN THE COMMUNITY	10
	<input type="checkbox"/> GAELIC IN EDUCATION	11
	<input type="checkbox"/> GAELIC IN THE WORKPLACE	11
	<input type="checkbox"/> GAELIC IN THE ARTS, HERITAGE, MEDIA and TOURISM	11
	<input type="checkbox"/> GAELIC IN ECONOMIC DEVELOPMENT	12
7.	D
	DELIVERY OF THE PLAN	12
8.	R
	REVIEW AND MONITORING OF THE PLAN	13

**ARGYLL AND BUTE COUNCIL
COMHAIRLE EARRA-GHÀIDHEAL AGUS BHÒID**

**GAELIC LANGUAGE
PLAN PLANA GÀIDHLIG**

Ma tha sibh ag iarraidh an sgrìobhainn seo ann an cànan no riochd eile,
no ma tha sibh a' feumachdainn seirbheis eadar, feuch gun leig sibh fios
thugainn.

If you would like this document in another language or format, or if you
require the services of an interpreter, please contact us.

Jeżeli chcieliby Państwo otrzymać ten dokument w innym języku lub w
innym formacie albo jeżeli potrzebna jest pomoc tłumacza, to prosimy o
kontakt z nami.

Polish

यह दस्तावेज़ यदि आपको किसी अन्य भाषा या अन्य रूप में चाहिये, या आपको
आनुवाद-सेवाओं की आवश्यकता हो तो हमसे संपर्क करें

Hindi

یہ دستاویز اگر آپ کو کسی دیگر زبان یا دیگر شکل میں درکار ہو، یا اگر آپ کو ترجمان کی خدمات چاہئیں تو براۓ مہربانی ہم سے رابطہ کیجئے۔

Urdu

ਜੇ ਇਹ ਦਸਤਾਵੇਜ਼ ਤੁਹਾਨੂੰ ਕਿਸੇ ਹੋਰ ਭਾਸ਼ਾ ਵਿਚ ਜਾਂ ਕਿਸੇ ਹੋਰ ਰੂਪ ਵਿਚ ਚਾਹੀਦਾ ਹੈ, ਜਾਂ ਜੇ ਤੁਹਾਨੂੰ ਗੱਲਬਾਤ ਸਮਝਾਉਣ ਲਈ ਕਿਸੇ
ਇੰਟਰਪ੍ਰੈਟਰ ਦੀ ਲੋੜ ਹੈ, ਤਾਂ ਤੁਸੀਂ ਸਾਨੂੰ ਦੱਸੋ।

Punja

bi

本文件可以翻譯為另一語文版本，或製作成另一格式，如有此需要，或需要傳譯員的協助，請與我們聯絡。

Canto

nese

本文件可以翻译为另一语文版本，或制作成另一格式，如有此需要，或需要传译员的协助，请与我们联系。

Mandarin

Argyll and Bute Council, Kilmory, Lochgilphead PA31 8RT
Telephone: 01546 602127 Fax: 01546 604472 Text: 07624808798
Email: enquiries@argyll-bute.gov.uk

1 INTRODUCTION

1.1 Our Council is forward looking and ambitious, continuously improving our relationship with our partners, customers and employees to ensure that we deliver the right services, by the best people, in the best way.

1.2 Our vision is 'Realising our Potential Together' and this is underpinned by our values:

We involve and listen to our customers and communities
We take pride in delivering best value services
We are open, honest, fair and inclusive
We respect and value everyone

1.3 We recognise the role Gaelic has played in the history of Argyll and Bute and we continue to promote the language and its culture to our communities.

1.4 We are committed to giving the Gaelic and English languages equal respect.

1.5 We are proud to be one of the local authorities which regularly host The Royal National Mod. The very first Gaelic Mod was held in Oban in 1892 and has since grown to be a major annual festival attracting visitors from across Scotland and also abroad. The economic benefits realised from holding such a high profile event in Argyll and Bute are welcomed by our communities and continues to emphasis the strong relationship which Argyll and Bute has with the Gaelic language, culture and history.

1.6 We recognise the importance of Gaelic in our communities where Gaelic continues to be used.

1.7 This Gaelic Language Plan describes how the Council, together in partnership with other organisations, will address the needs of our individuals, groups and communities who continue to see Gaelic as a major element in their daily lives.

Councillor James Robb
Council Leader

Sally Loudon
Chief Executive

Author: Improvement and Organisational Development, Improvement and HR
Department: Chief Executive
Date Approved: 21 March 2013 Argyll and Bute Council
Date Amended:
Version: 2.0

ARGYLL AND BUTE COUNCIL COMHAIRLE EARRA-GHÀIDHEAL AGUS BHÒID

GAELIC LANGUAGE PLAN PLANA GÀIDHLIG

2 SCOPE

- 2.1 This plan applies to all employees of Argyll and Bute Council. The overall intention is to create a working environment where the Gaelic language and culture is celebrated and promoted both inside the council and externally throughout our communities.

3 POLICY STATEMENT

- Argyll and Bute Council's policy is to expand and promote the range of Gaelic services and resources which are available to our service users.
- We will also give effect to the principle, introduced by the National Gaelic Language Plan that the Gaelic and English languages should be accorded equal respect.
- We are committed to the promotion and future growth of Gaelic education, language and cultural activities through continued awareness raising and language learning opportunities for employees and our communities.
- This Plan builds on the work that the Council has undertaken in the past in implementing our first language plan, promoting Gaelic Education and, specifically, on the benefits to be realised through bilingual learning.
- We aim to increase the number of Gaelic speakers in Argyll and Bute, increase the opportunities for using Gaelic in the community, home and workplace; promotion of bilingualism in the home and in our education establishments, maximise the economic benefits of

Gaelic related activities in the area and to promote the status and visibility of Gaelic in Argyll and Bute.

4 THE NATIONAL CONTEXT

- 4.1 Section 2 of the Gaelic Language (Scotland) Act 2005 requires Bòrd na Gàidhlig to “prepare and submit to the Scottish Ministers a national Gaelic language plan”, and revised versions thereof “no later than 5 years after the date on which the most recent plan is published”.
- 4.2 The National Plan for Gaelic 2012 – 2017 sets out the main aims and actions under the key domains – Home; Education and Learning; Community; Workplace; Arts, Media, Heritage and Tourism. To successfully implement these actions, a national partnership between the Scottish Government, Bòrd na Gàidhlig and local authorities together with many other public, voluntary and private bodies will have to be created to ensure that a consistent approach is undertaken to guarantee a sustainable future for the language.
- 4.3 The headline target in the National Plan is that the 2021 National Census confirms that the growth in the number of young people learning Gaelic continues and that by 2031 it has reached replacement level.
- 4.4 The National Gaelic Language Plan 2012 - 2017 carries forward the first Plan’s vision of a sustainable future for Gaelic as a “healthy, vibrant language, increasingly used, valued and respected in a modern, multicultural and multilingual Scotland”. The strapline **‘Fas is feabhas/Growth and quality’** reflects the three overarching aims which inform the Plan:
- Arresting the decline in the overall number of Gaelic speakers in Scotland by increasing the number acquiring the language;
 - Expanding the range of situations in which Gaelic is used, in line with the Gaelic Language Act’s key principle of equal respect for Gaelic and English; and
 - Helping speakers of Gaelic, both learners and native speakers, to develop their competence and their confidence in using it, and

Author: Improvement and Organisational Development, Improvement and HR

Department: Chief Executive

Date Approved: 21 March 2013 Argyll and Bute Council

Date Amended:

Version: 2.0

ensuring that the language itself continues to be healthy and vibrant.

4.5 The National Plan for Gaelic also contributes to the Scottish Government's National Outcomes as follows:

DEVELOPMENT AREA	NATIONAL OUTCOME NUMBER	NATIONAL OUTCOME STATEMENT
Home/Education and learning	5	Our children have the best start in life and are ready to succeed
	4	Our young people are successful learners, confident individuals, effective contributors and responsible citizens
	3	We are better educated, more skilled and more successful, renowned for our research and innovation
Community/Workplace	11	We have strong, resilient and supportive communities where people take responsibility for their own actions and how they affect others
	2	We realise our full economic potential; with more and better employment opportunities for our people
Arts, Media and heritage	13	We take pride in a strong, fair and inclusive national identity
The whole Plan	15	Our public services are high quality, continually improving, efficient and responsive to local people's needs

5 ARGYLL AND BUTE

- 5.1 Argyll and Bute Council was one of the first six public authorities across Scotland issued with a statutory notice by Bòrd na Gàidhlig to produce a Gaelic Language Plan. This Plan was approved in June 2008; and section 7 of the Act outlines the requirement to review the Gaelic Language Plan no later than 5 years after the date of approval of the previous Plan.
- 5.2 The Council's first generation language Plan consisted of an ambitious set of actions which resulted in a challenge to fully implement the actions. This second generational plan aims to build on the developments made by the Council in implementing the first Plan as well as learning invaluable lessons on the challenges that were faced together with identifying new priorities and areas for development.
- 5.3 The Council's second language plan is closely aligned to and assists in contributing to the targets contained in the National Plan for Gaelic 2012 – 2017.

6 THEMES

- 6.1 As our language plan is closely aligned with the national plan as prepared by Bòrd na Gàidhlig, we have identified the following themes to focus on.

6.1.1 GAELIC IN THE HOME

The Council will continue to promote the importance of Gaelic in the home and in family settings by encouraging young people and adults to improve their Gaelic language skills. Provision of language learning classes will be available to Council employees, adult learners and parents of Gaelic Medium pupils.

6.1.2 GAELIC IN THE COMMUNITY

The Council will increase the opportunities to use Gaelic in both formal and informal settings for native and fluent Gaelic speakers and learners of the language. Provision of language courses in partnership with Ionad Chaluim Chille Ìle will be planned across Argyll and Bute. The Council will also continue to work with local and national based organisations to promote Gaelic and increase the level of opportunities our communities have to use the language.

6.1.3 GAELIC IN EDUCATION

As providers of Gaelic Medium Education in 6 areas across Argyll and Bute, the Council acknowledges the duty it has to continue to offer a high quality level of education to pupils within these units, associated pre-school units and secondary schools. We will endeavour to offer Gaelic Learners in Primary Schools (GLPS) and Gaelic Learner Education (GLE) in all areas. We also recognise the important role the Council has in shaping national policy on education initiatives and policies.

6.1.4 GAELIC IN THE WORKPLACE

The Council will continue to assess opportunities to offer Gaelic across services with a view to it becoming mainstreamed across the organisation. The Council will also encourage partners to promote the use and increase the status of Gaelic in Argyll and Bute. We will increase resources available to staff to increase their language skills and understanding of the Gaelic language. We will carry out a staff audit of Gaelic skills to identify the language skills of staff in speaking, reading and writing the language. Elected members and employees will be able to access language learning opportunities.

6.1.5 GAELIC IN THE ARTS, HERITAGE, MEDIA and TOURISM

The Council will continue to support its links with Royal National Mod and local mods to maximise the number of participants using Gaelic at these events. The Council aims to increase the number of supported events where there is an opportunity to use Gaelic. Through these events, the Council will aim to gain a detailed

analysis of the economic benefits which are realised by holding Gaelic related events in Argyll and Bute.

6.1.6 GAELIC IN ECONOMIC DEVELOPMENT

The Council will continue to identify and assess opportunities for increased economic benefits for the area through the delivery of Gaelic associated events, e.g. The Royal National Mod is held in Argyll and Bute every 3/4 years, as well as scoping the opportunities for economic benefits to be realised through cultural tourism.

7 DELIVERY OF THE PLAN

- 7.1 As part of the Improvement and HR service, the Improvement and Organisational Development (IOD) team leads on the delivery of the Gaelic Language Plan supported by lead officers from across the Council and, where possible, by external partner organisations.
- 7.2 Lead officers provide regular update reports to the Improvement and Organisational Development team and the Lead Councillor for Community, Culture, Customer and Communication.
- 7.3 The Council will continue to invest resources in Gaelic education, language and culture and will realign priorities and resources for future development although we recognise that this is a difficult economic period for public services and with this in mind, we will make best use of resources.
- 7.4 The Council will also continue to consider any external and partnership funding opportunities that are appropriate. The Council accepts that a strong working relationship with other organisations operating in Argyll and Bute which deliver services and activities through Gaelic are pivotal to sustaining growth in Gaelic in Argyll and Bute and will lead to effective implementation of our language plan, thus creating more opportunities for Gaelic to be used.

8 REVIEW AND MONITORING OF THE PLAN

- 8.1 As a strategic corporate document, the Gaelic Language Plan will be monitored and scrutinised to the same level as the Council's Corporate Plan and service plans through a scorecard.
- 8.2 Performance reports are submitted to the designated Gaelic lead spokesperson by lead officers on a quarterly basis.
- 8.3 It is important to acknowledge that the language plan remains adaptable and flexible to the priorities set out by the Council, particularly when circumstances may change.

DRAFT

**Argyll and Bute Community Planning
Partnership**

CPP Management Committee
Date: 8th May 2013

argyll and bute
communityplanningpartnership



Title: Autumn 2013 Area Community Planning Events

1. SUMMARY

1.1 This report is to provide the Management Committee with feedback from the discussions that took place at the March round of Area Community Planning groups on the subject of the proposed autumn Area Community Planning events. This report also seeks support from partners to ensure the sustainability of these events as part of the community engagement commitments made in the new SOA.

2. RECOMMENDATIONS

2.1 That the Management Committee agrees to the proposed structure/content for the events.

2.2 That partners agree to back these events by providing in kind support or through a financial contribution.

3. BACKGROUND

3.1 During 2010 and 2011 Local Area Community Planning Groups (Now Area Community Planning groups) delivered area consultation events enabling communities to participate in the community planning process at an area level.

3.2 In June 2012 a proposal was made by the Council that the CPP should continue to deliver such events.

3.3 This proposal was put to the CPP Management Committee in August 2012. The Management Committee agreed that the events should take place but as there was insufficient time to plan the events for Autumn 2012 the first round of local area community planning events would take place in 2013. At the meeting in August there was discussion around the resource requirements to deliver such events and that in the current economic climate this would be a challenge. There was also agreement that these events were good practice in terms of community engagement and would give the CPP the opportunity to fulfil the engagement commitments required as part of the community planning process.

3.4 Scottish Government guidance on the requirements for Single Outcome Agreements published in December 2012 outlined a number of requirements for engaging and consulting communities

throughout the life of the SOA.

The guidance document states that each new SOA should demonstrate that:-

- *Activity on community engagement is properly planned, resourced and integrated across partners;*
- *The quality and impact of community engagement is measured and reported on;*
- *Building the capacity of communities to engage and deliver for themselves is properly planned, resourced and integrated across partners; and*
- *Workforce development within and across partners ensures that key staff have the skills and knowledge required to engage effectively with communities.*

3.5 At the March round of Area Community Planning Groups partners were asked to consider what the purpose and outcomes of these events should be. Each ACPG was asked the following questions:

1. *What would the format of the events be?*
2. *What would be the length of the event? i.e half day, whole day, two days*
3. *How would remote and/or island communities be involved? i.e. VC, teleconference., remote facilitators, overnight accommodation provided.*
4. *Would the events be an opportunity to highlight good practice or showcase community projects, and if so, from your area, or from other areas in order to share good practice?*
5. *Can you suggest appropriate topics for discussion?*
6. *Would Area Community Planning Groups like to use these events to consult on any issues/plans/etc?*

3.6 Feedback from that 4 ACPG was varied but there were also common themes. Summary of feedback:-

- The event should be a one day event either morning and afternoon or afternoon and evening. Most areas would prefer Saturday events.
- Power Point Voting should be used strategically to enable partners to ask the same questions at each event. Localised questions should also be included where required/appropriate. Results can be merged to provide area and A&B wide results.
- Young people should be encouraged to participate either through attending or adding to PPV results.
- Schools were good venues.
- VC should be available where possible.

- Topics for discussion should be a mix of strategic and local interest issues.
- Information on local groups/activities, funding opportunities and support available for communities should make up part of the events.

- 3.7** For each Area Community Planning Group a planning sub group has been nominated.
- 3.8** Each event requires a minimum of £2,000 to cover the basic costs. We therefore require an annual budget of £8,000 to deliver these events in all four areas.
- 3.9** An application for funding support has been submitted to Education Scotland and an approach has also been made to the Health and Wellbeing Partnership (formerly HIPAG) for support. Additional funding support will be required to achieve the £8,000 required. Partners are being asked to provide in-kind and financial support for this year and an on-going commitment to ensure the CPP fulfils its engagement commitments for the life of the 2013-23 SOA.

4. CONCLUSION

- 4.1** Good progress is being made to ensure that these events are delivered for 2013 but unless we can ensure partner contributions the situation is not sustainable and we will struggle to fulfil our engagement commitments in future years.

For further information contact:

Telephone

This page is intentionally left blank

**Argyll and Bute Community Planning
Partnership**

**Mid Argyll, Kintyre and the Islands
Community Planning Group**

Date: Wednesday, 5th June 2013



Area Forum Events 2013

1. SUMMARY

1.1 This report asks the Mid Argyll, Kintyre and the Islands Community Planning Group to consider the next steps for organising an Area Forum event in the autumn that reflects the results of a survey of interested parties undertaken in April/May of this year.

2. RECOMMENDATION

2.1 That the MAKI CPG:

- considers the results of the survey and the priorities selected by the survey respondents and agrees on the priority topic/s for the event;
- considers the survey feedback in deciding a date and timing of the event;
- nominates additional members to join the working group to plan and organise the event;
- agrees the venue for the event.

3. DETAIL

3.1 In August 2012 the CPP Management Committee agreed to hold an annual area forum in each area which would be similar to the Forward Together events held in November 2010, and further agreed to support the planning and delivery of annual area forum events commencing in autumn 2013.

3.2 The Mid Argyll, Kintyre and the Islands Community Planning Group discussed this matter in September 2012 and agreed to the principle of holding an area forum.

3.3 The event was discussed again at the MAKI CPG in March of this year and Community Development Officer, Audrey Baird, agreed to work with Maryanne Stewart, Argyll Voluntary Action, to conduct a survey of CPG members, voluntary organisations and delegates who attended the Forward Together event in 2012.

- 3.4 The preferred venue for the event agreed at the MAKI CPG in March was Tarbert School, subject to the necessary ICT systems being available (primarily video conferencing). Tarbert School is included in a current programme to install new VC equipment in schools. This equipment is expected to be capable of linking with the Council's VC 'bridge'. In order for Tarbert School to be an appropriate venue for a sizeable event of this nature, a network point would be needed in a large capacity room in the building and the system would need to be installed in good time for the event in the Autumn.
- 3.5 Please see attached survey, which was circulated in early April. The deadline for responses is Friday 10 May. At the time of writing this report (April 26), 20 responses has been received and the top three priority areas chosen is Community Regeneration and Community Development, Health and Wellbeing, and Young People and Employment. The preferred timing for the event was daytime and during a week day. It should be noted that these may change if further survey sheets are returned within the timescale set.

4. CONCLUSION

- 4.1 MAKI CPG is making good progress towards organising an area wide forum in autumn 2013 and has given interested parties an opportunity to influence the focus and timing of the event.

For further information please contact: Audrey Baird
audrey.baird@argyll-bute.gov.uk
Community Development Officer
Community & Culture

Telephone: 01546 604754



TELL US WHAT INFORMATION WOULD BE USEFUL FOR YOU

Mid Argyll, Kintyre and the Islands Community Planning Group (MAKI CPG) propose organising an event in the autumn 2013 to share information and good practice across the area.

Please tell us what your **three** key areas of concern are so we can try to structure the event around your needs. Key themes are identified below, but add any others you think are important in the blank spaces provided. Please also let us know if you would prefer a week day, weekend, daytime or evening event.

PLEASE TICK YOUR TOP THREE ISSUES OF CONCERN

Community Regeneration & Community Development	
Environment & Renewables	
Families & Care	
Health & Wellbeing	
Housing	
Leisure & Tourism	
Transport & Infrastructure	
Welfare & Benefits	
Young People & Employment	

Week day	
Weekend	
Daytime	
Evening	

Please write any other comments here (for example, would it help you to access the event if video conferencing was available?):

The format of the event is likely to be similar to the Community Planning Group's Forward Together events that were held in summer 2009 and autumn 2010, with video conferencing available to islands in 2010.

Please email your responses by **FRIDAY 10 MAY** to Audrey Baird, Community Development Officer, Argyll & Bute Council at audrey.baird@argyll-bute.gov.uk or phone for more information on 01546 604754.

This page is intentionally left blank